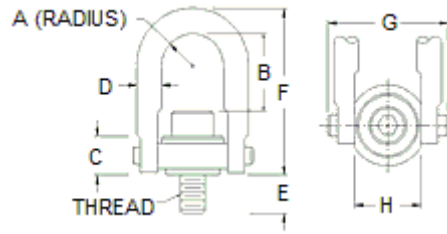


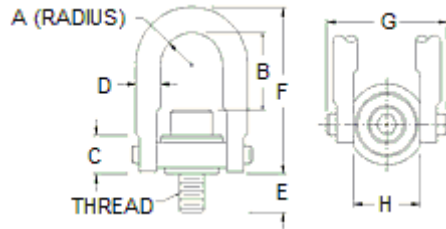
SWIVEL HOIST RING



Item #	U-Bar (D)	Rated Load	Thread Size	Thread Protrusion (E)	B	Torque
46100	3/8	600 lbs	1/4" - 20	0.54 in	1.27 in	6 ft/lb
46102	3/8	800 lbs	5/16" - 18	0.29 in	1.27 in	7 ft/lb
46104	3/8	800 lbs	5/16" - 18	0.54 in	1.27 in	7 ft/lb
46106	3/8	1000 lbs	3/8" - 16	0.54 in	1.27 in	12 ft/lb
46351	3/8	1250 lbs	7/16" - 14	0.79 in	1.20 in	22 ft/lb
46352	3/8	1500 lbs	1/2" - 13	0.79 in	1.15 in	28 ft/lb
46606	1/2	2000 lbs	7/16" - 14	1.07 in	1.9 in	22 ft/lb
46602	1/2	2500 lbs	1/2" - 13	1.07 in	1.84 in	28 ft/lb
46000	3/4	2000 lbs	7/16" - 14	0.78 in	2.37 in	22 ft/lb
46638	3/4 - Long	2000 lbs	7/16" - 14	0.78 in	4.34 in	22 ft/lb
46008	3/4	2500 lbs	1/2" - 13	0.78 in	2.31 in	28 ft/lb
46644	3/4 - Long	2500 lbs	1/2" - 13	0.78 in	4.25 in	28 ft/lb
46010	3/4	2500 lbs	1/2" - 13	1.03 in	2.31 in	28 ft/lb
46646	3/4 - Long	2500 lbs	1/2" - 13	1.03 in	4.25 in	28 ft/lb
46012	3/4	2500 lbs	1/2" - 13	1.28 in	2.31 in	28 ft/lb
46648	3/4 - Long	2500 lbs	1/2" - 13	1.28 in	4.25 in	28 ft/lb
46007	3/4	2500 lbs	9/16" - 12	0.78 in	2.25 in	30 ft/lb
46651	3/4 - Long	2500 lbs	9/16" - 12	0.78 in	4.19 in	30 ft/lb
46002	3/4	4000 lbs	5/8" - 11	0.78 in	2.18 in	60 ft/lb
46641	3/4 - Long	4000 lbs	5/8" - 11	0.78 in	4.12 in	60 ft/lb
46004	3/4	4000 lbs	5/8" - 11	1.03 in	2.18 in	60 ft/lb
46640	3/4 - Long	4000 lbs	5/8" - 11	1.03 in	4.12 in	60 ft/lb
46006	3/4	4000 lbs	5/8" - 11	1.28 in	2.18 in	60 ft/lb
46642	3/4 - Long	4000 lbs	5/8" - 11	1.28 in	4.12 in	60 ft/lb
46005	3/4	4000 lbs	5/8" - 11	1.53 in	2.18 in	60 ft/lb
46643	3/4 - Long	4000 lbs	5/8" - 11	1.53 in	4.12 in	60 ft/lb
46014	3/4	5000 lbs	3/4" - 10	1.03 in	2.06 in	100 ft/lb
46650	3/4 - Long	5000 lbs	3/4" - 10	1.03 in	4 in	100 ft/lb
46018	3/4	5000 lbs	3/4" - 10	1.53 in	2.06 in	100 ft/lb
46654	3/4 - Long	5000 lbs	3/4" - 10	1.53 in	4 in	100 ft/lb
46353	3/4	6000 lbs	7/8" - 9	1.53 in	1.94 in	160 ft/lb
41604	3/4 - Long	6000 lbs	7/8" - 9	1.53 in	3.88 in	160 ft/lb
46354	3/4	6500 lbs	1" - 8	1.53 in	1.71 in	230 ft/lb
41606	3/4 - Long	6500 lbs	1" - 8	1.53 in	3.75 in	230 ft/lb

****CONTINUED ON NEXT PAGE****

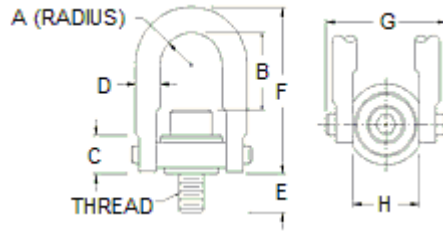
SWIVEL HOIST RING



Item #	U-Bar (D)	Rated Load	Thread Size	Thread Protrusion (E)	B	Torque
46204	1	7000 lbs	3/4" - 10	1.04 in	3.06 in	100 ft/lb
46658	3/4 - Long	7000 lbs	3/4" - 10	1.04 in	4.65 in	100 ft/lb
46206	1	7000 lbs	3/4" - 10	1.54 in	3.06 in	100 ft/lb
46660	1 - Long	7000 lbs	3/4" - 10	1.54 in	4.65 in	100 ft/lb
46202	1	8000 lbs	7/8" - 9	1.04 in	2.93 in	160 ft/lb
46656	1 - Long	8000 lbs	7/8" - 9	1.04 in	4.52 in	160 ft/lb
46203	1	8000 lbs	7/8" - 9	1.29 in	2.93 in	160 ft/lb
46657	1 - Long	8000 lbs	7/8" - 9	1.29 in	4.52 in	160 ft/lb
46205	1	8000 lbs	7/8" - 9	1.54 in	2.93 in	160 ft/lb
46655	1 - Long	8000 lbs	7/8" - 9	1.54 in	4.52 in	160 ft/lb
46210	1	10000 lbs	1" - 8	1.29 in	2.81 in	230 ft/lb
46662	1 - Long	10000 lbs	1" - 8	1.29 in	4.4 in	230 ft/lb
46212	1	10000 lbs	1" - 8	1.54 in	2.81 in	230 ft/lb
46664	1 - Long	10000 lbs	1" - 8	1.54 in	4.4 in	230 ft/lb
46214	1	10000 lbs	1" - 8	2.29 in	2.81 in	230 ft/lb
46666	1 - Long	10000 lbs	1" - 8	2.29 in	4.4 in	230 ft/lb
46216	1	10000 lbs	1 1/8" - 7	2.29 in	2.69 in	230 ft/lb
46668	1 - Long	10000 lbs	1 1/8" - 7	2.29 in	4.28 in	230 ft/lb
46217	1	10000 lbs	1 1/8" - 8	2.29 in	2.69 in	230 ft/lb
46669	1 - Long	10000 lbs	1 1/8" - 8	2.29 in	4.28 in	230 ft/lb
46355	1	11500 lbs	1 1/4" - 7	2.29 in	2.44 in	470 ft/lb
41612	1 - Long	11500 lbs	1 1/4" - 7	2.29 in	4.15 in	470 ft/lb
46356	1	12000 lbs	1 3/8" - 6	2.29 in	2.31 in	470 ft/lb
41614	1 - Long	12000 lbs	1 3/8" - 6	2.29 in	4.13 in	470 ft/lb
46357	1	12500 lbs	1 1/2" - 6	2.29 in	2.19 in	800 ft/lb
41616	1 - Long	12500 lbs	1 1/2" - 6	2.29 in	3.62 in	800 ft/lb
46802	1 1/4	15000 lbs	1 1/4" - 7	1.89 in	4.12 in	470 ft/lb
46805	1 1/4	15000 lbs	1 1/4" - 8	1.89 in	4.12 in	470 ft/lb
46806	1 1/4	15000 lbs	1 3/8" - 6	1.89 in	4.06 in	470 ft/lb
46807	1 1/4	15000 lbs	1 3/8" - 8	1.89 in	4.06 in	470 ft/lb
46359	1 1/4	16500 lbs	1 1/2" - 6	2.89 in	4.12 in	800 ft/lb
46360	1 1/4	17000 lbs	1 5/8" - 5 1/2	2.89 in	4.12 in	800 ft/lb
46361	1 1/4	17500 lbs	1 3/4" - 5	2.89 in	4.06 in	800 ft/lb
46362	1 1/4	18000 lbs	1 7/8" - 5	2.89 in	4.06 in	800 ft/lb
46363	1 1/4	18500 lbs	2" - 4 1/2	2.89 in	5.50 in	800 ft/lb
46702	1 1/2	20000 lbs	1 3/8" - 6	2.5 in	5.5 in	540 ft/lb

****CONTINUED ON NEXT PAGE****

SWIVEL HOIST RING



Item #	U-Bar (D)	Rated Load	Thread Size	Thread Protrusion (E)	B	Torque
46404	1 3/4	24000 lbs	1 1/2" - 6	2.7 in	6.41 in	800 ft/lb
46405	1 3/4	24000 lbs	1 1/2" - 8	2.7 in	6.41 in	800 ft/lb
46408	1 3/4	24000 lbs	1 3/4" - 5	3.2 in	6.16 in	800 ft/lb
46406	1 3/4	24000 lbs	1 3/4" - 8	3.2 in	6.16 in	800 ft/lb
46400	1 3/4	30000 lbs	2" - 4 1/2	3.2 in	5.91 in	800 ft/lb
46440	1 3/4	30000 lbs	2" - 8	3.2 in	5.91 in	800 ft/lb
46431	1 3/4	30000 lbs	2 1/4" - 4 1/2	3.2 in	5.66 in	800 ft/lb
46435	1 3/4	30000 lbs	2 1/4" - 8	3.2 in	5.66 in	800 ft/lb
46364	1 3/4	32500 lbs	2 1/4" - 4 1/2	3.20 in	6.41 in	800 ft/lb
46365	1 3/4	35000 lbs	2 1/2" - 4	3.75 in	6.41 in	2100 ft/lb
47006	2 1/4	50000 lbs	2 1/2" - 4	4 in	8.03 in	2100 ft/lb
47002	2 1/4	50000 lbs	2 1/2" - 8	4 in	8.03 in	2100 ft/lb
47008	2 1/4	50000 lbs	2 3/4" - 4	4 in	7.75 in	2100 ft/lb
47010	2 1/4	50000 lbs	2 3/4" - 8	4 in	7.75 in	2100 ft/lb
46366	2 1/4	55000 lbs	2 3/4" - 4	4.00 in	6.16 in	2100 ft/lb
46367	2 1/4	60000 lbs	3" - 4	5.00 in	6.16 in	4300 ft/lb
47200	2 3/4	75000 lbs	3" - 4	5 in	8.48 in	4300 ft/lb
47202	2 3/4	75000 lbs	3" - 8	5 in	8.48 in	4300 ft/lb
46332	2 3/4	80000 lbs	3 1/2" - 4	5.00 in	7.98 in	5100 ft/lb
46334	2 3/4	80000 lbs	3 1/2" - 8	5.00 in	7.98 in	5100 ft/lb
47402	3 1/4	100000 lbs	3 1/2" - 4	7 in	9.28 in	5100 ft/lb
47406	3 1/4	100000 lbs	3 1/2" - 8	7 in	9.28 in	5100 ft/lb
47602	5	250000 lbs	6" - 4	9 in	14 in	9900 ft/lb